

# Wayne County State of the County Health Report

## HEALTH DISPARITY

### FACTS:

- Death rates for breast cancer in Wayne County for minority females is 33.8 per 1000 females as compared to 27.0 per 1000 for caucasian females. (2001-05)
- Death rates from prostate cancer in Wayne County for minority males is 77.2 per 1000 males as compared to 23.9 per 1000 for caucasian males. (2001-05)
- Death rates from Diabetes are twice as high for minority females as compared to caucasian females.

### *Inside This Issue:*

Leading Causes of Death	2
Childhood Obesity	2
Demographic Info.	2
STDs in Wayne Co.	3
Infant Mortality	3
Teen Pregnancy	4
Agency Information	4

## Minority Health

Addressing health disparities continued to be a top priority for the Wayne County Health Department during 2006-2007. Health data regarding leading causes of morbidity and mortality reveal higher rates for African Americans versus the caucasian population. During 2006-07, a \$20,000 grant was received by the Wayne County Health Department from the Office of Minority Health to address Health Disparities. Local organizations whose focus is minority health were encouraged to apply for small mini-grants. Numerous groups applied and the following received funding: N.C. Cooperative Extension Service, Epsilon Phi Omega Chapter, AKA, Wayne Partnership for Children, the Hispanic Community Development Center, Rebuilding Broken Places and the First Congregational United Church of Christ.

These agencies have worked hard this year to address various concerns such as chronic disease, teen pregnancy, HIV/AIDS and childhood obesity.

Additionally, this year, the

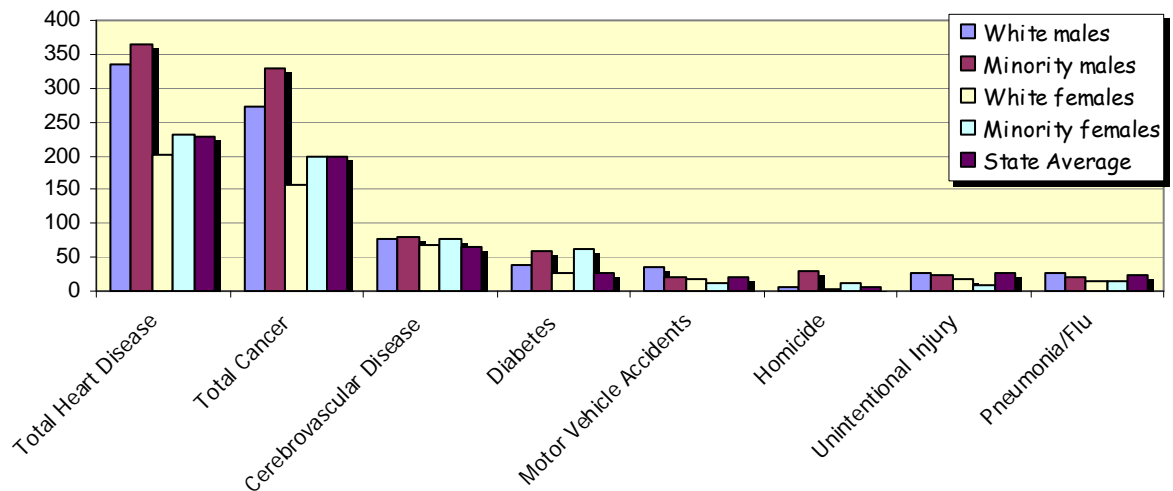


Health Promotion Program at the Health Department worked to implement policy and environmental changes related to physical activity and nutrition in local African American churches. The Health Department also mailed out monthly health education literature to 12 targeted African American churches in an attempt to address health information gaps as noted by our local Minority Health Steering Committee.

We are also proud to have worked side by side with our local Cooperative Extension Program in implementing the African American Churches Eating Smart & Moving More Curriculum. The year 2007 also brought another bonus in that the Health Department and the N.C. Cooperative Extension Service joined together to apply for and received an Eat Smart Move More NC Grant. Additionally a grant was also received from the Office of Minority Health that will allow the hiring of a Minority Health Coordinator to more fully address future Minority Health initiatives.

## Heart Disease & Cancer Lead in the Major Causes of Death

Graph 13: *Wayne County Leading Causes of Mortality* (2001-2005)



Heart Disease death rates in Wayne County and N.C. continue to decline. It is well recognized that advanced medical care along with positive lifestyle changes have made the difference in living a longer more productive life for many North Carolinians. We know that more and more individuals are heeding to the call for a healthier diet, regular exercise and abstinence from use of all tobacco products. Most worksites and a good number of restaurants have changed their policy to a smoke-free environment. During 2006-07, the Wayne County Health Department joined with the local Cooperative Extension Service in promoting the state initiative "Eat Smart, Move More." In 2008, both agencies will join to promote the "Eat Smart, Move More, Weigh Less" curriculum to Wayne County residents. Smoking cessation classes also continue to be offered to the local public as well as promotion of the NC Tobacco Quit Line along with promotion of newer pharmaceutical products that make quitting smoking easier to do.

Cancer continues to be a major killer of residents in Wayne County. Promoting the regular consumption of fruits & vegetables, cessation from use of tobacco products, regular health screenings, smoke-free environments and reducing obesity will be important initiatives to continue in 2008.

## Demographic Information:

### CHILDHOOD OBESITY

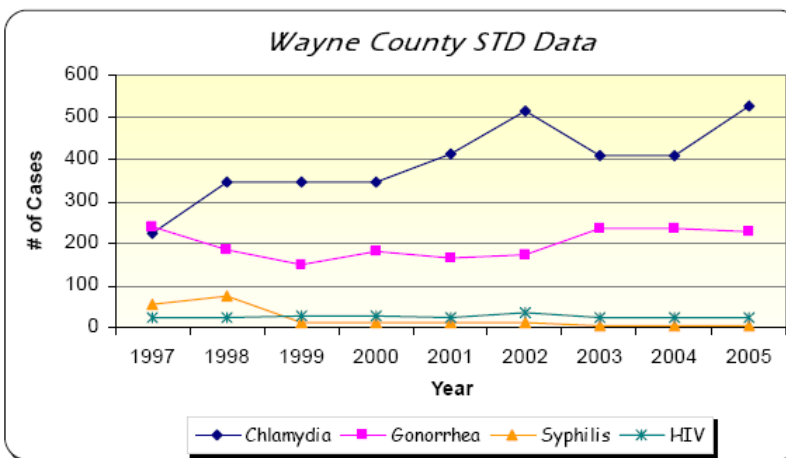
- Childhood obesity is at epidemic proportions and healthier diets and proper exercise are the key to reducing this problem.
- Wayne County implemented an Obesity Task Force in 2006 and is working as a community to address this issue.

Population, 2005 estimate	115,714
Median family income, 2004	\$45,400
% of persons below poverty, 2000	13.8 %
Children in poverty (%), 2005	18.9%
Unemployment Rate, 2005	5.2 %
4 yr. High school completion rate, 2006	61.5 %
Rate of substantiated child abuse/ neglect (per 1,000 population) (05-06)	29.0%
Violent crime rate per 100,00 (2005)	457.8

## Sexually transmitted diseases among Wayne County residents

In the graph shown to the right, Wayne County's number of chlamydia cases have almost doubled since 1997. When compared with state rates and number of cases, Wayne County's rates continue to be higher than the state rate.

Chlamydia infections are the most prevalent of all sexually transmitted diseases (STDs). In women, these infections often result in serious reproductive consequences. NC's rates (per 100,000 population), for the year 2004, is approximately 2 1/2 times higher in African Americans versus White populations.



state rate since 2003.

The rates of chlamydia and gonorrheal infections tend to be highest among the adolescent population. A heavy focus on STD prevention is key in reducing the rates among this particular

For gonorrheal infection among Wayne County residents, overall the rate has not had much of a change in the 9-year trend. (1999-2005). Wayne County has had gonorrhea rates below the state rate, for years 1997-2002; but have been above the

age group.

HIV and syphilis rates in Wayne County have leveled off since 1999, and have maintained a steady level, below the NC rate.

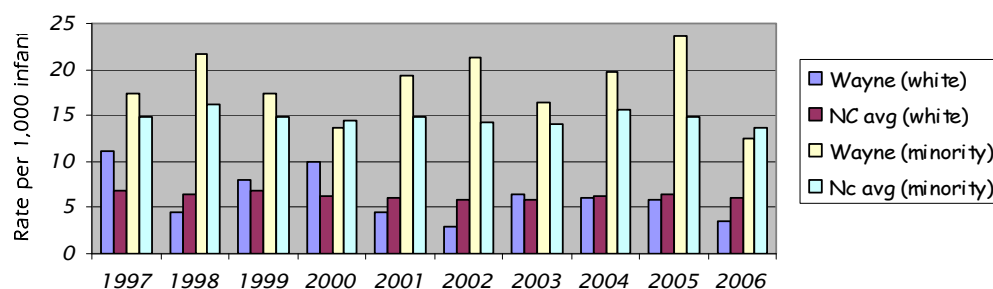
## Infant Mortality in Wayne Declines in 2006

Infant mortality data are used to compare the health and well-being of populations across the U.S. and across other countries. The national (U.S.) infant mortality rate, the rate at which babies less than one year of age die, has continued to steadily decline over the past several decades. In 2006, N.C. and Wayne County saw a welcome decline for both whites and nonwhites.

Leading causes of infant death include congenital abnormalities, pre-term/low-birth weight, Sudden Infant Death Syndrome (SIDS), problems related to complications of pregnancy, and respiratory distress syndrome.

Promoting access to early and continuous prenatal care helps identify conditions and behavior that can

Graph 4: **Infant Mortality - Wayne County**



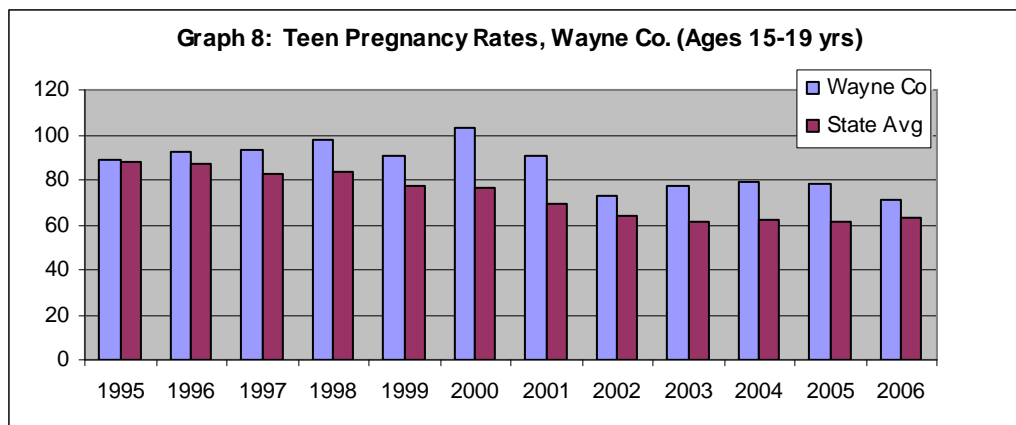
result in low birth-weight babies, such as smoking, drug and alcohol abuse, poor nutrition and inadequate weight gain during pregnancy, and repeat pregnancy within six months or less of previous pregnancy. In early 2007, the Wayne County Health Department implemented an Open Access Appointment in the Prenatal Program making it easier and faster for pregnant women to enter into early prenatal care.

# Teen pregnancy declines in 2006

Teen pregnancy rates in Wayne County saw a definite decline in 2006. Overall, Wayne County has observed a decreasing trend in the rates of teen pregnancies over the past several years.

Although the N.C. teen pregnancy rate has been on a gradual decline as well, it did see a slight increase in 2006.

Teen pregnancy is a complex problem with no easy answer. Many agencies in Wayne County have worked for many years to address this difficult and expensive issue. It is a multi-faceted problem that requires a multi-faceted approach. Initiatives in Wayne County include education of youth through



the local schools that includes abstinence education along with contraceptive/STD education and referral as allowed per the local school board policy. Local WISH Centers also provide school based approaches to the problem of teenage pregnancy and include education and referral. Local grass root organizations also focus time, effort and dollars towards helping local youth make more positive choices in their pursuit of a brighter future.



## Wayne County Health Department

301 N. Herman Street  
Box CC  
Goldsboro, NC 27530

Telephone: (919) 731-1000

Visit us online!

[www.waynegov.com/health](http://www.waynegov.com/health)



*The mission of the Wayne County Health Department is to prevent disease, promote healthy behaviors and provide a safe environment in our community.*

### HOURS

Monday–Friday  
8:00 am–5:00 pm