



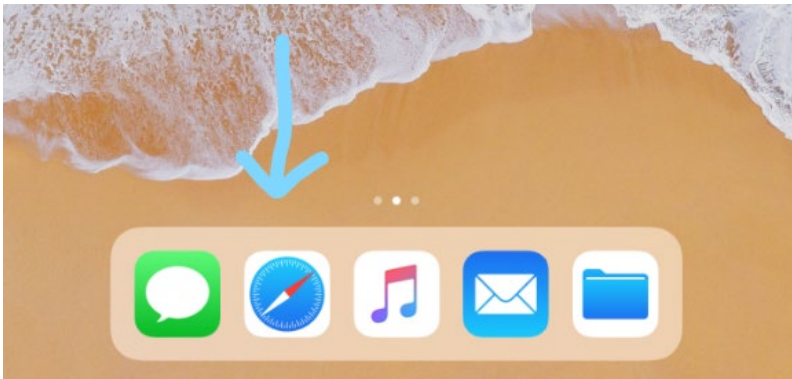
## Wayne County Mobile Device Mgmt. Enrollment

### How do I enroll my device?

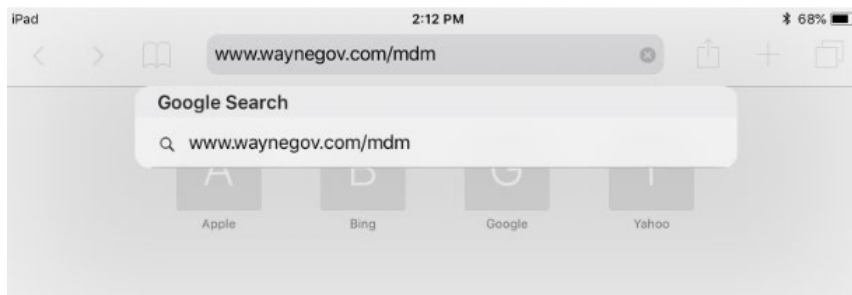
Please follow these step-by-step instructions to enroll your device.

#### Apple iOS devices:

1. Home Screen > Open Safari



2. In open browser window type url address > [www.waynegov.com/mdm](http://www.waynegov.com/mdm)



3. On the County Mobile Device Management page select > **Mobile Device Management Policy**. Read and Sign this document (electronically). Please have these submitted by January 31 to avoid any interruption to County resources.

Feature Links > Employee Portal > Mobile Device Management

Computer Safety Tips ▶

## Mobile Device Management

How To's ▶

Mobile Device Management (MDM) Enrollment

Tech News

To enroll your Mobile Device please use the provided links below. Go to the first link, read and sign the policy. Then go to the second link on your device. This will begin the Mobile Device Enrollment process. Follow the prompts and refer to the enrollment instructions in your email. For any questions please contact the Wayne County IT Department.

Common County Forms ▶

Documents

[Mobile Device Management Policy](#) ←

Mobile Device Management

[Mobile Device Enrollment Link](#) (must be done on the mobile device)

4. Next go back to the County MDM webpage and select > **Mobile Device Enrollment Link**. This will begin the enrollment process for your device.

Feature Links > Employee Portal > Mobile Device Management

Computer Safety Tips ▶

## Mobile Device Management

How To's ▶

Mobile Device Management (MDM) Enrollment

Tech News

To enroll your Mobile Device please use the provided links below. Go to the first link, read and sign the policy. Then go to the second link on your device. This will begin the Mobile Device Enrollment process. Follow the prompts and refer to the enrollment instructions in your email. For any questions please contact the Wayne County IT Department.

Common County Forms ▶

Documents

[Mobile Device Management Policy](#)

Mobile Device Management

[Mobile Device Enrollment Link](#) (must be done on the mobile device) ←

5. On the “IBM MaaS360” Authenticate page enter your County **Username, Password, and Domain**. Select **Continue** once completed. *\*\*Please note that these credentials are the same as what you use to sign into your computer or email. The “Domain” field should already say “waynegov”. If it does not please enter > waynegov into the Domain field now.*

IBM MaaS360

### Authenticate

Provide your corporate credentials.

→ Password is mandatory.

Username: john.smith

Password: [masked]

Domain: waynegov

Continue

6. Next a “Steps” screen is displayed. **Select > Continue**

IBM MaaS360

### Steps

This device enrollment process will configure your device for corporate access.

Step 1: Accept Terms

Step 2: Download & Install Profile

Step 3: Install Apps

Continue

7. Next Check the box to Accept the terms or agreement and **select > Continue**

IBM MaaS360

### Accept Terms

LICENSE INFORMATION

The Programs listed below are licensed under the following License Information terms and conditions in addition to the Program license terms previously agreed to by Client and IBM. If Client does not have previously agreed to license terms in effect for the Program, the International License Agreement for Non-Warranted Programs (Z125-5589-05) applies.

Program Name (Program Number):  
IBM MaaS360 Mobile Device (TOOL)

The following standard terms apply to Licensee's use of the Program.

Prohibited Uses

Licensee may not use or authorize others to use the Program if failure of the Program could lead to death, bodily injury, or property or environmental damage.

Limited Use Program

I have read and accept the terms.

Continue

8. Next a "Download & Install Profile" screen is displayed. **Select > Install**

IBM MaaS360

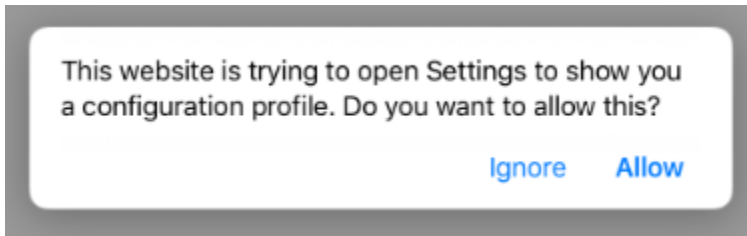
### Download & Install Profile

On clicking Install, profile download and install will begin.

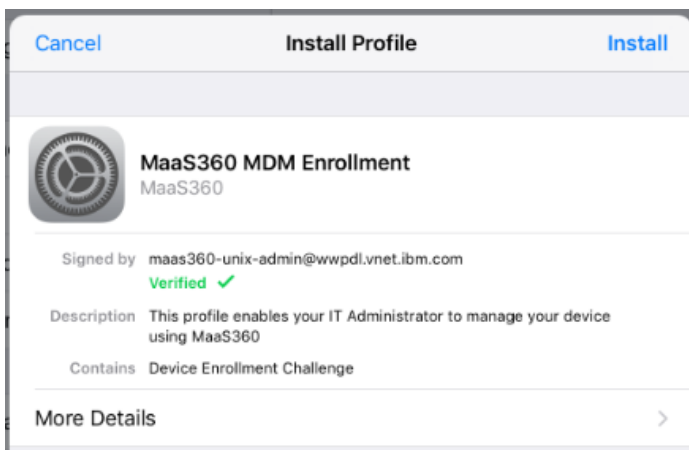
Please accept any prompts for profile installation to continue with the enrollment.

Install

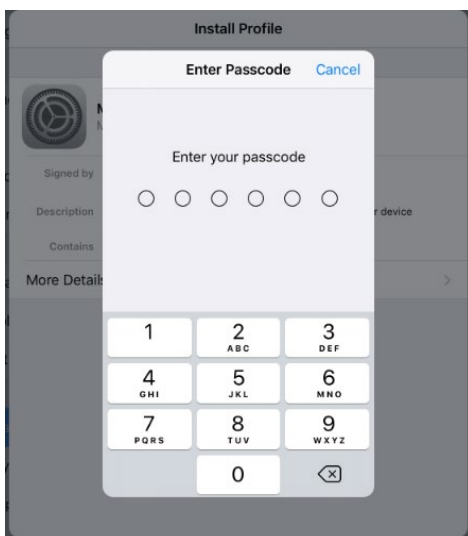
9. A pop-up will display. **Select > Allow**



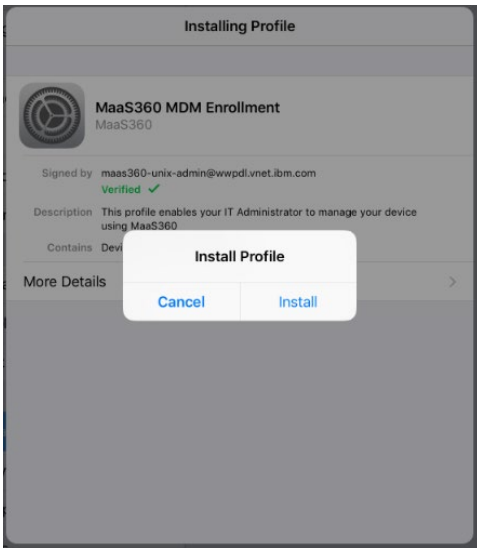
10. On the “Install Profile” screen **select > Install**



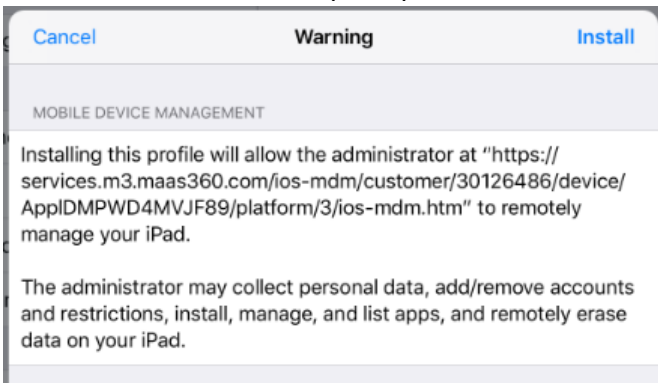
11. Next you will be prompted for a Passcode. This is the passcode you use to open your device. **Enter > Passcode**



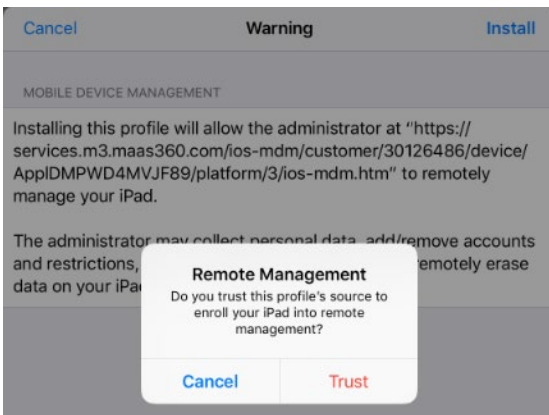
12. When prompted **select > Install**



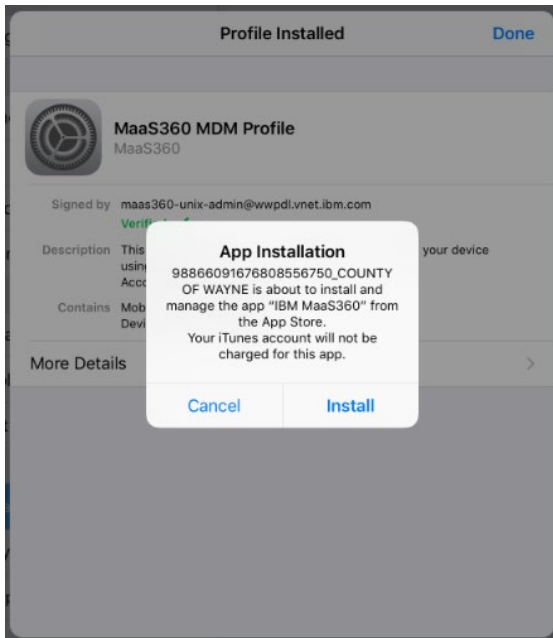
13. A **WARNING** screen will prompt. **Select > Install**



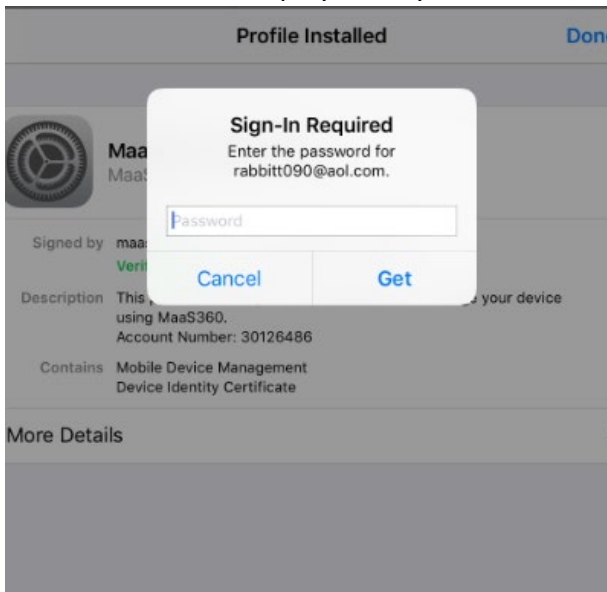
14. Next **select > Trust**



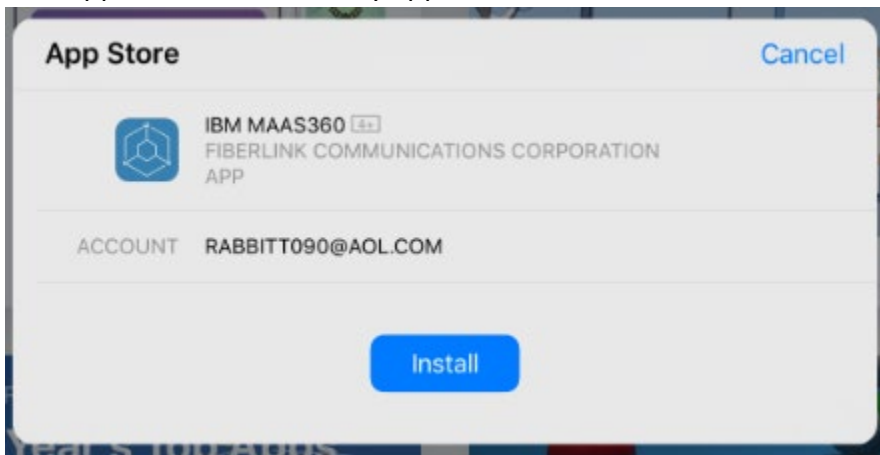
15. After a couple seconds you will be prompted by an “App Installation” screen. **Select > Install**



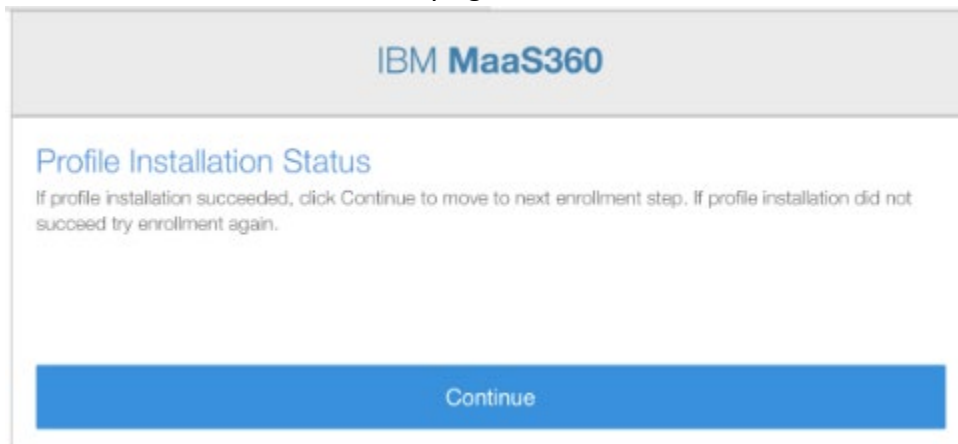
16. You may be asked to sign-in. If so you need to sign-in with the Apple Store account for the email address displayed on your screen. **Enter > Password**



17. On App Store window verify application is “IBM MAAS360”. **Select > Install**



18. Application should begin installation. Once complete you will receive a “Profile Installation Status” window verifying a successful install. **Select > Continue**



19. Finally you will receive a message verifying that your device is now enrolled in MDM. Please check home screen to verify you see the 2 new applications installed on your device as seen below. After/during enrollment your email will automatically be configured for you.



## IBM MaaS360

### Install Apps

Your device is now enrolled.

You may now see prompts to allow corporate apps to be installed on this device. Accept those prompts for continued access to corporate data and resources.

